

RED PANDA SLEEP PATTERN



Thank you for supporting us. Before you start, you should carefully read what you need to know and the tools to prepare. Any changes for larger/smaller sizes will be indicated at the start of each pattern piece.

Material

- Yarn: Bernat: #5 Bulky Yarn
- Color: Brown, Orange and White
- 3.5mm (E) Hook
- Stitch marker
- Sewing needle
- Scissors
- Fiberfill

Abbreviations

MR : Magic Ring
st(s) : stitch(es)
sl st : slip stitch
sk : skip
ch: chain
SC : single crochet
INC : Increase
BLO : Back loop only
DEC : Decrease

This is the instruction for crocheting amigurumi
with a size ~45cmX18cm (~17.7inchx7inch)

HEAD:

Begin with Orange yarn:

When the text is bold, switch to white yarn / When the text is brown, switch to brown yarn

- Row 1: 6 SC in an MR (6)
- Row 2: INC 6 times (12)
- Row 3: (SC, INC) 6 times (18)
- Row 4: (2SC, INC) 6 times (24)
- Row 5: (3SC, INC) 6 times (30)
- Row 6: (4SC, INC) 6 times (36)
- Row 7: (5SC, INC) 6 times (42)
- Row 8: (6SC, INC) 6 times (48)
- Row 9-10: 48SC (48)
- Row 11: 18SC, **2SC**, 7SC, **2SC**, 19SC (48)
- Row 12: 17SC, **3SC**, 7SC, **3SC**, 18SC (48)
- Row 13-14: 48SC (48)
- Row 15: (3SC, INC) 4 times, SC, **2SC**, **INC**, 3SC, **INC**, 3SC, **INC**, **3SC**, **INC**, (3SC, INC) 4 times (60)
- Row 16: 20SC, **4SC**, 4SC, 5SC, 3SC, **4SC**, 20SC (60)
- Row 17: 19SC, **4SC**, 5SC, 5SC, 5SC, **3SC**, 19SC (60)
- Row 18: 18SC, **4SC**, 6SC, 5SC, 6SC, **4SC**, 17SC (60)
- Row 19: 18SC, **5SC**, 5SC, 5SC, 5SC, **5SC**, 17SC (60)
- Row 20: 19SC, **5SC**, 4SC, 5SC, 4SC, **5SC**, 18SC (60)
- Row 21: (3SC, DEC) 4 times, **3SC**, **DEC**, 3SC, **DEC**, **3SC**, DEC, SC, **2SC**, **DEC**, **SC**, 2SC, DEC, (3SC, DEC) 3 times (48)
- Row 22: (4SC, DEC) 3 times, **3SC**, SC, DEC, **2SC**, 2SC, **DEC**, **2SC**, 2SC, DEC, (4SC, DEC) 2 times, (40)
- Row 23: (3SC, DEC) 3 times, SC, **2SC**, **DEC**, **3SC**, **DEC**, **SC**, 2SC, DEC, (3SC, DEC) 2 times (32)

- Row 24: (2SC, DEC) 3 times, 2SC, **DEC, 2SC, DEC**, (2SC, DEC) 3 times(24)
- Row 25: (SC, DEC) 8 times (16)
- Row 26: DEC 8 times (8)

stuffing

Cut the yarn, leaving a long tail for sewing

6BLO sts together



MUZZLE:

Use with White yarn

- Row 1: 6 SC in an MR (6)
- Row 2: INC 6 times (12)
- Row 3: (SC, INC) 6 times (18)
- Row 4: (2SC, INC) 6 times (24)
- Row 5: 24SC (24)
- Row 6: (3SC, INC) 6 times (30)
- Row 7: 30SC

stuffing

Fasten off and leave a long tail for sewing the muzzle to the head on R13-20. Insert the nose on R1-2.



Sew sleeping eyes on R14, 7sts apart.



EARS (Make 2):

Begin with Brown yarn

- Row 1: 6chain, start in 2nd chain from the hook: 5SC (5)
- Row 2: 1chain, turn, skip 1st, 4SC (4)
- Row 3: 1chain, turn, skip 1st, 3SC (3)
- Row 4: 1chain, turn, skip 1st, 2SC (2)
- Row 5: 1chain, turn, skip 1st, 1SC (1)

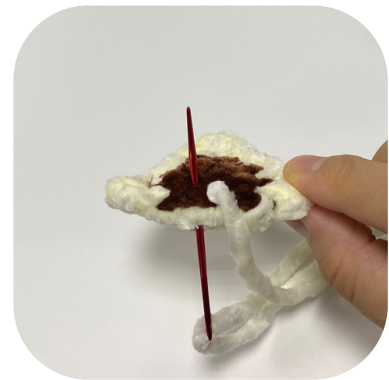
Crochet R1-8 with white yarn

DO NOT stuff, sew 2 pieces together with white yarn

- Row 6: 1chain, 5SC, 3SC in the same sts, 5SC (13)
- Row 7: 1chain, turn, INC, 5SC, 3SC in the same sts, 5SC, INC (17)

Fasten off and leave a long tail for sewing the ears in to the head on R4-10, 6sts apart.

Make one more pieces like this.



ARMS (Make 2):

Use Brown yarn

- Row 1: 6SC in MR (6)
- Row 2: 6INC (12)
- Row 3: (SC, INC) 6 times (18)
- Row 4-5: 18SC (18)

Change to orange yarn

- Row 6-10: 18SC (18)

stuffing

Fasten off and cut the yarn.



LEGS (Make 2):

Use Brown yarn

- Row 1: 6SC in MR (6)
- Row 2: 6INC (12)
- Row 3: (SC, INC) 6 times (18)
- Row 4: (2SC, INC) 6 times (24)
- Row 5: 24SC (24)

Change to orange yarn

- Row 6: 24SC (24)
- Row 7: (2SC, DEC) 6 times (18)
- Row 8-10: 18SC (18)

stuffing

Make one more leg until round 10 but DO NOT cut the yarn.



BODY:

Begin with Orange yarn

Make 5 chain:

- Row 1: 18SC of the first leg, 5SC of the chain, 18SC of the second leg, 5SC on a back bump of the chains between 2 legs (46)
- Row 2: 18SC, INC, 3SC, INC, 23SC (48)
- Row 3: 9SC, (3SC, INC) 6 times, 15SC (54)
- Row 4-5: 54SC (54)
- Row 6: 9SC, (INC, 4SC) 6 times, 15SC (60)
- Row 7-12: 60SC (60)
- Row 13: 8SC, DEC, 39SC, DEC, 9SC (58)
- Row 14: 7SC, DEC, 39SC, DEC, 8SC (56)
- Row 15: 6SC, DEC, 39SC, DEC, 7SC (54)
- Row 16-21: 54SC (54)
- Row 22: 10SC, (DEC, 5SC) 5 times, DEC, 7SC (48)
- Row 23-25: 48SC (48)
- Row 26: 12SC, (3SC, DEC) 6 times, 6SC (42)
- Row 27-28: 42SC (42)

stuffing

- Row 29: 8SC, 6SC of the first arm, 20SC, 6SC of the second arm, 2SC (42)



- Row 30: 8SC, 12SC of the first arm, 20SC, 12SC of the second arm, 2SC (54)
- Row 31: 54SC (54)
- Row 32: 14SC, (3SC, DEC) 6 times, 10SC (48)
- Row 33: 48SC (48)
- Row 34: 14SC, (2SC, DEC) 6 times, 10SC (42)
- Row 35: 42SC (42)

stuffing

Fasten off and leave a long tail for sewing.



Sew the head to the body

stuffing



TAIL:

Begin with Brown yarn

- Row 1: 6SC (6)
- Row 2: 6INC (12)
- Row 3: (SC, INC) 6 times (18)
- Row 4: (5SC, INC) 3 times (21)

Change to orange yarn

- Row 5-8: 21SC (21)

Change to brown yarn

- Row 9: (5SC, DEC) 3 times (18)
- Row 10-12: 18SC (18)

Change to orange yarn

- Row 13: (7SC, DEC) 2 times (16)
- Row 14-16: 16SC (16)

Change to brown yarn

- Row 17: (6SC, DEC) 2 times (14)
- Row 18-19: 14SC (14)

Change to orange yarn

- Row 20: (5SC, DEC) 2 times (12)
- Row 21: 12SC (12)

stuffing

**Fasten off and leave a long tail for sewing
close two sides of the tail together**

Sew the tail the body R8.





Congratulations!

Your Red Panda Crochet is complete!
Please message me if you have any
questions