

SLEEP CAPYBARA CROCHET PATTERN



- Thank you for supporting us. Before you start, you should carefully read what you need to know and the tools to prepare. Any changes for larger/smaller sizes will be indicated at the start of each pattern piece.

Material

- Yarn: Bernat: #5 Bulky Yarn
- Color: Brown, Black
- 3.5mm (E) Hook
- Stitch marker
- Sewing needle
- Scissors
- Fiberfill

Abbreviations

- MR : Magic Ring
- st(s) : stitch(es)
- sl st : slip stitch
- ch: Chain
- SC : Single crochet
- INC : Increase
- DEC: Decrease

This is the instruction for crocheting amigurumi
with a size ~45cmX18cm (~17.7inchx7inch)

ARMS (Make 2):

Use Brown yarn

- Row 1: 6SC in an MR (6)
- Row 2: 6INC (12)
- Row 3: (SC, INC) 6 times (18)
- Row 4-10: 18SC (18)

stuffing

Fasten off and cut the yarn.

LEGS (Make 2):

Use Brown yarn

- Row 1: 6SC in an MR (6)
- Row 2: 6INC (12)
- Row 3: (SC, INC) 6 times (18)
- Row 4: (2SC, INC) 6 times (24)
- Row 5-6: 24SC (24)
- Row 7: (2SC, DEC) 6 times (18)
- Row 8-10: 18SC (18)

stuffing

Make one more leg until round 10 but DO NOT cut the yarn.



BODY:

Begin with Brown yarn

Make chain 5: seamless leg Join

- Row 1: 18SC of the first leg, 5SC of the chain, 18SC of the second leg, 5SC on a back bump of the chains between 2 legs (46)
- Row 2: 18SC, INC, 3SC, INC, 23SC (48)
- Row 3: 12SC, INC, (3SC, INC) 5 times, 15SC (54)
- Row 4-5: 54SC (54)
- Row 6: 9SC, INC, (4SC, INC) 5 times, 19SC (60)
- Row 7-12: 60SC (60)
- Row 13: 8SC, DEC, 39SC, DEC, 9SC (58)
- Row 14: 7SC, DEC, 39SC, DEC, 8SC (56)
- Row 15: 6SC, DEC, 39SC, DEC, 7SC (54)
- Row 16-21: 54SC (54)
- Row 22: 10SC, DEC, (5SC, DEC) 5 times, 7SC (48)
- Row 23-24: 48SC (48)
- Row 25: 12SC, (3SC, DEC) 6 times, 6SC (42)
- Row 26-27: 42SC (42)
- Row 28: 8SC, 6SC of the first arm, 20SC, 6SC of the second arm, 2SC (42)
- Row 29: 8SC, 12SC of the first arm, 20SC, 12SC of the second arm, 2SC (54)
- Row 30: 54SC (54)
- Row 31: 14SC, (3SC, DEC) 6 times, 10SC (48)
- Row 32: 14SC, (2SC, DEC) 6 times, 10SC (42)
- Row 33: 42SC (42)

stuffing

Fasten off and leave a long tail for sewing.



HEAD:

Begin with Brown yarn

Row 1: 6SC in an MR (6)

Row 2: 6 INC times (12)

Row 3: (SC, INC) 6 times (18)

Row 4: (2SC, INC) 6 times (24)

Row 5: (3SC, INC) 6 times (30)

Row 6: (4SC, INC) 6 times (36)

Row 7: (5SC, INC) 6 times (42)

Row 8: (6SC, INC) 6 times (48)

Row 9: (7SC, INC) 6 times (54)

Row 10-13: 54SC (54)

Row 14: 18SC, (2SC, INC) 6 times, 18SC (60)

Row 15-20: 60SC (60)

Row 21: 18SC, (2SC, DEC) 6 times, 18SC (54)

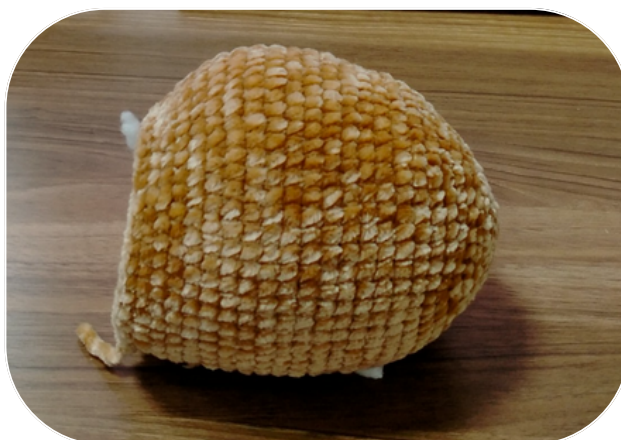
Row 22-23: 54SC (54)

Row 24: 15SC, (2SC, DEC) 6 times, 15SC (48)

Row 25: 48SC (48)

Row 26: 12SC, (2SC, DEC) 6 times, 12SC (42)

stuffing



EARS (Make 2):

Begin with Brown yarn

Row 1: 6SC in an MR (6)

Row 2: 6 INC times (12)

Row 3-4: 12SC (12)

Row 5: 6 DEC (6)



TAIL:

Begin with Brown yarn

Row 1: 6SC in an MR (6)

Row 2: 6 INC times (12)

Row 3: (SC, INC) 6 times (18)

Row 4-5: 18SC (12)



TIME TO ATTACH THEM TO THE BODY

Sew the head to the nose



Sew the ears between rows 19 and 20, 2 ears apart 12 stitches



Sew the tail to the body



Sew eyes and nose with Black yarn





Congratulations!

Your Capybara Crochet is complete!
Please message me if you have any
questions